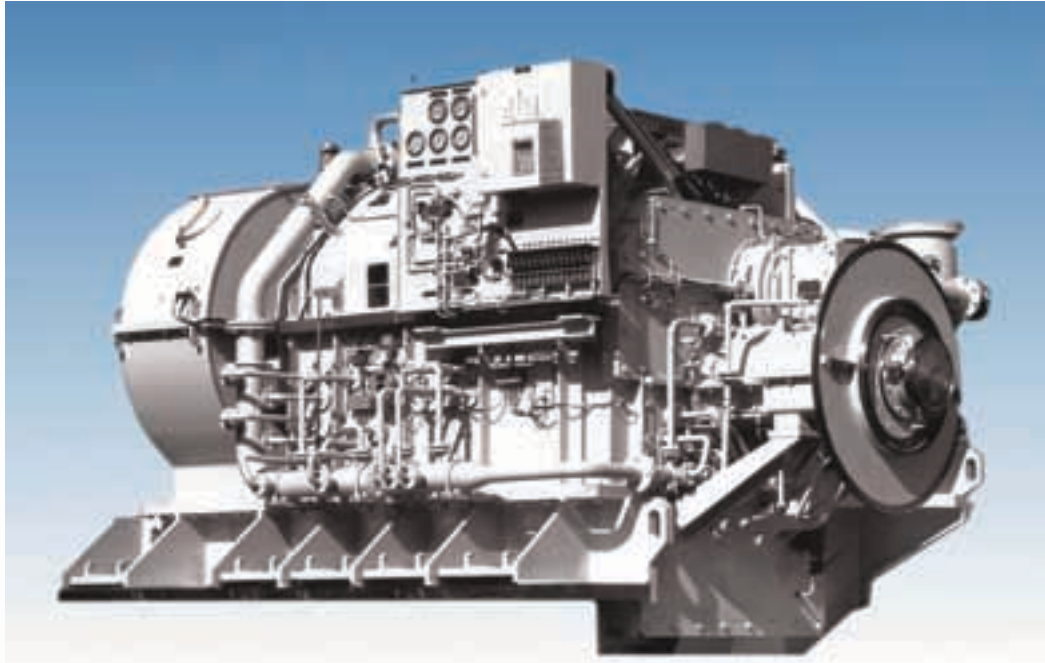


# ELECON MARINE GEARS



**CODOG Type Marine Gearbox for Indian Navy- Power Rating : 22,400 Kw, Gearbox Weight : 60,000 Kgs.**

Elecon Engineering Company Limited was established in the year 1951. Since then, it has been cast in the mould of a pioneer in setting trailblazing standards of technical excellence. For almost six decades, Elecon has supplied hi-tech equipment to major core sectors such as steel, fertilizers, cement, coal, lignite and iron ore mines, thermal power stations and port mechanization in India and abroad.

Elecon Engineering Company Limited is a proud partner of India's defence industry with a demonstrated capability to manufacture main propulsion gearbox for the Navy and Coast Guard. Modern gear manufacturing with an integrated facility to fabricate large and complex gearbox casings meet the highest reliability and quality standards in keeping with the enduring tradition of Elecon.



**COGAG Type Marine Gearbox for Indian Navy- Power Rating : 44,800 Kw, Gearbox Weight : 85,000 Kgs.**

# RANGE OF PRODUCTS



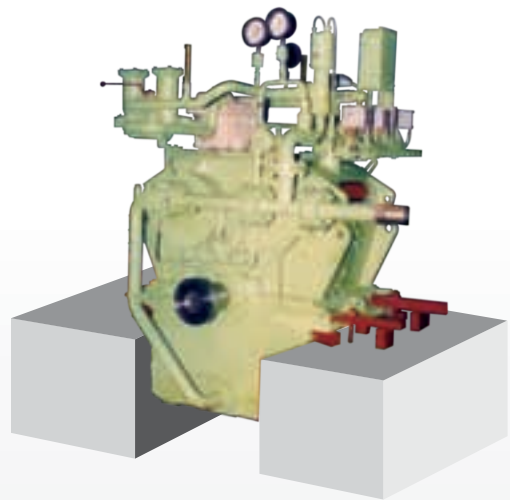
Marine reduction gear for CPP Drive Type ASL 69  
Power rating : 4,700 Kw for Coast Guard OPVs



Marine reduction gear for CPP Drive Type ASL 103  
Power rating : 9,000 Kw for Coast Guard OPVs



Marine reduction gear for Fixed Pitch Propellers  
Type AWS 40 Power rating -340 Kw



Marine reduction gear for Fixed Pitch Propellers  
Type AWSF 80 Power rating – 630 Kw



Manufactured by:

**ELECON ENGINEERING CO. LTD.**

Post Box # 6, Anand - Sojitra Road, Vallabh Vidyanagar - 388 120, Gujarat, INDIA  
Tele.: +91 2692 236 469 / 236 513 | Fax: +91 2692 227 484 | E-mail: [infogear@elecon.com](mailto:infogear@elecon.com)  
Website: [www.elecon.com](http://www.elecon.com) | CIN L29100GJ1960PLC001082



For information  
and enquiry